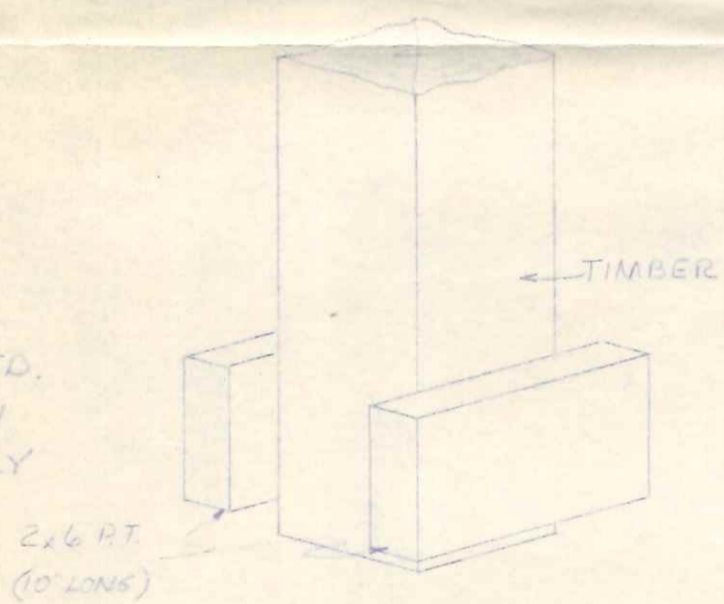


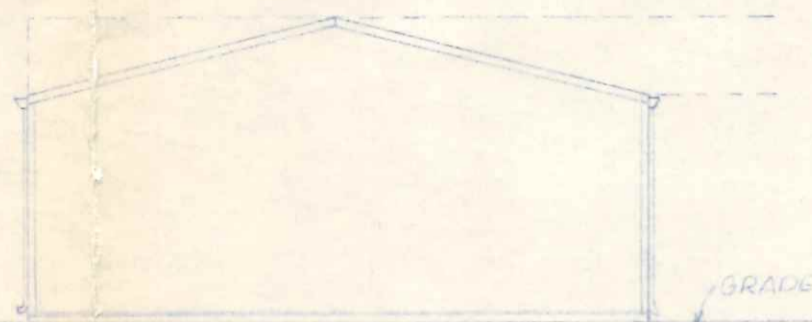
PLAN

NOTES:

1. DESIGN LOAD = 25 p.s.f. LIVE + 5 p.s.f. DEAD
2. ROOFING - NATURAL ALUM.
3. SIDING - GOLD ALUM.
4. INSULATION - 1" TECHNIPOAM
5. STRESSES TIMBERS $f = 1300$ p.s.i. $E = 775$ p.s.i.
GIRTS & PURLINS $E = 1100$ p.s.i.
SUPPORTS $f = 1650$ p.s.i.
6. DESIGN SOIL CAPACITY = 3000 p.s.i.
7. NAILS & STRUCTURAL MEMBERS SHALL BE CASE HARDENED
8. EXIT DOOR TO HAVE TYPE "B" HARDWARE
9. MINIMUM OF (2) TYPE 4BC CARBON DIOXIDE FIRE EXTINGUISHERS REQUIRED.
10. METAL SIDING TO BE GROUNDED WITH 8" COPPER ROD AND LABGED SECURELY TO SIDING.



ANCHOR PAD DETAIL



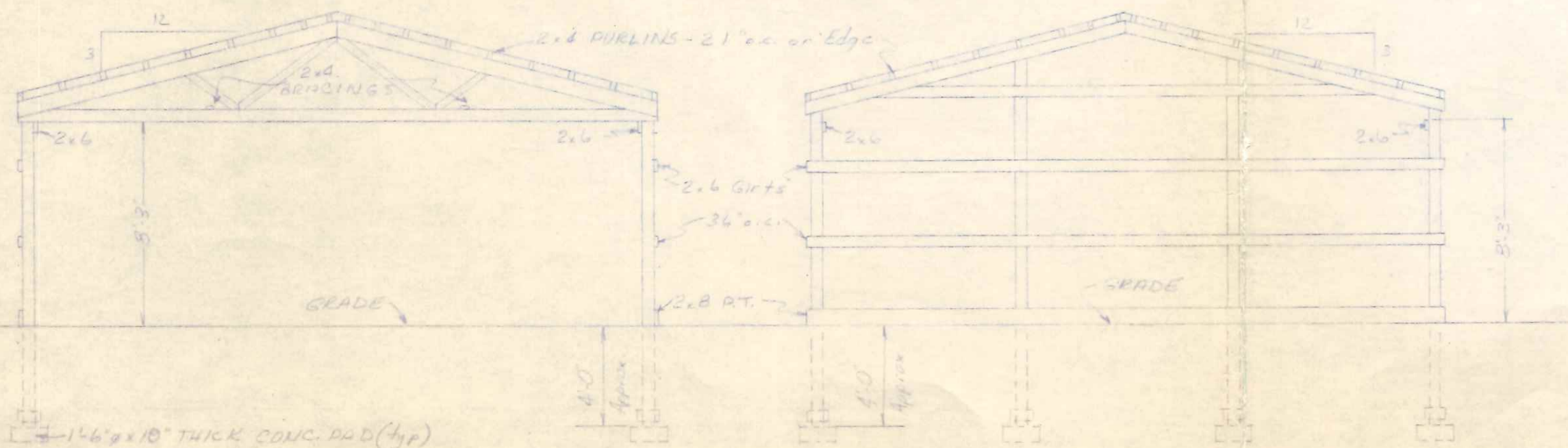
SOUTH ELEVATION



EAST ELEVATION

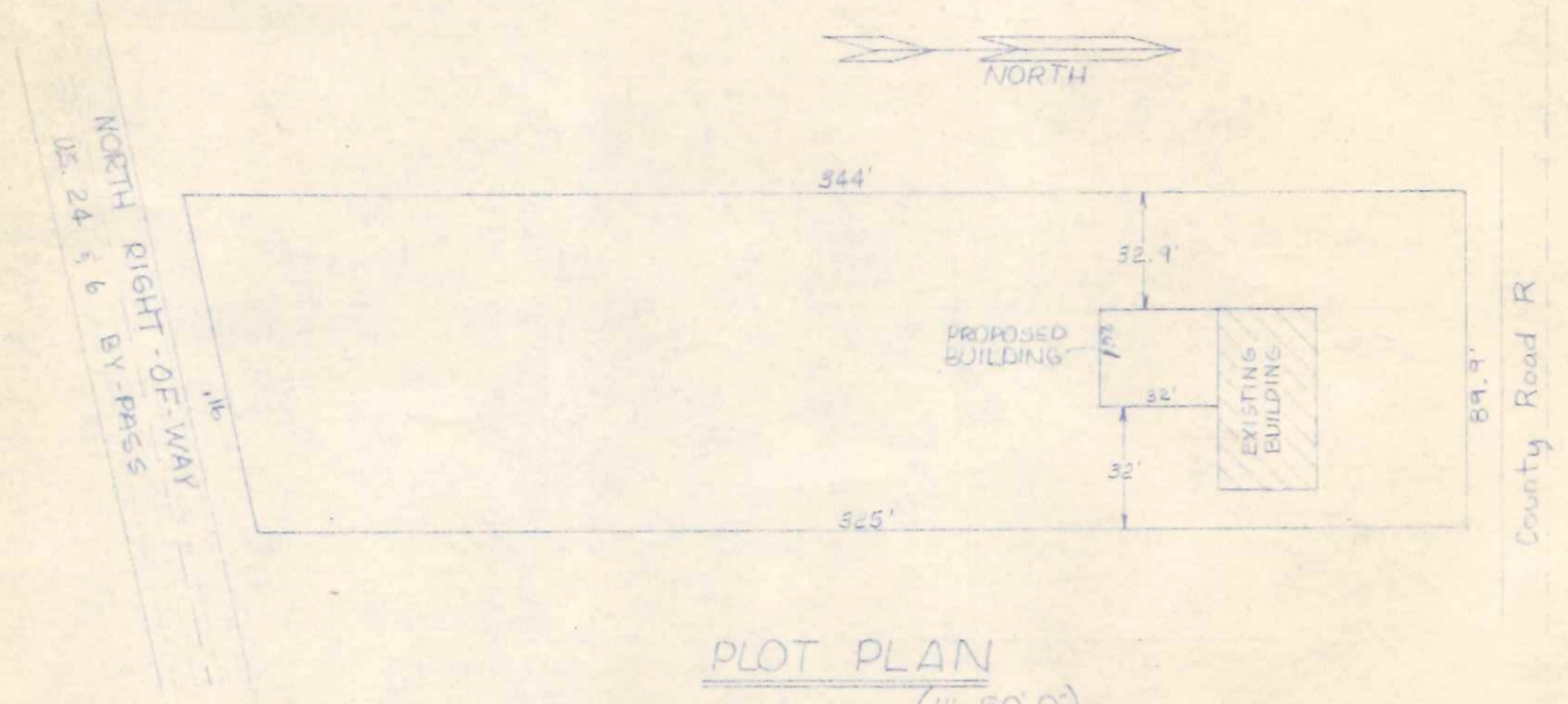


WEST ELEVATION



CROSS SECTION

END FRAMING ELEVATION



PLOT PLAN
(1" = 50'-0")



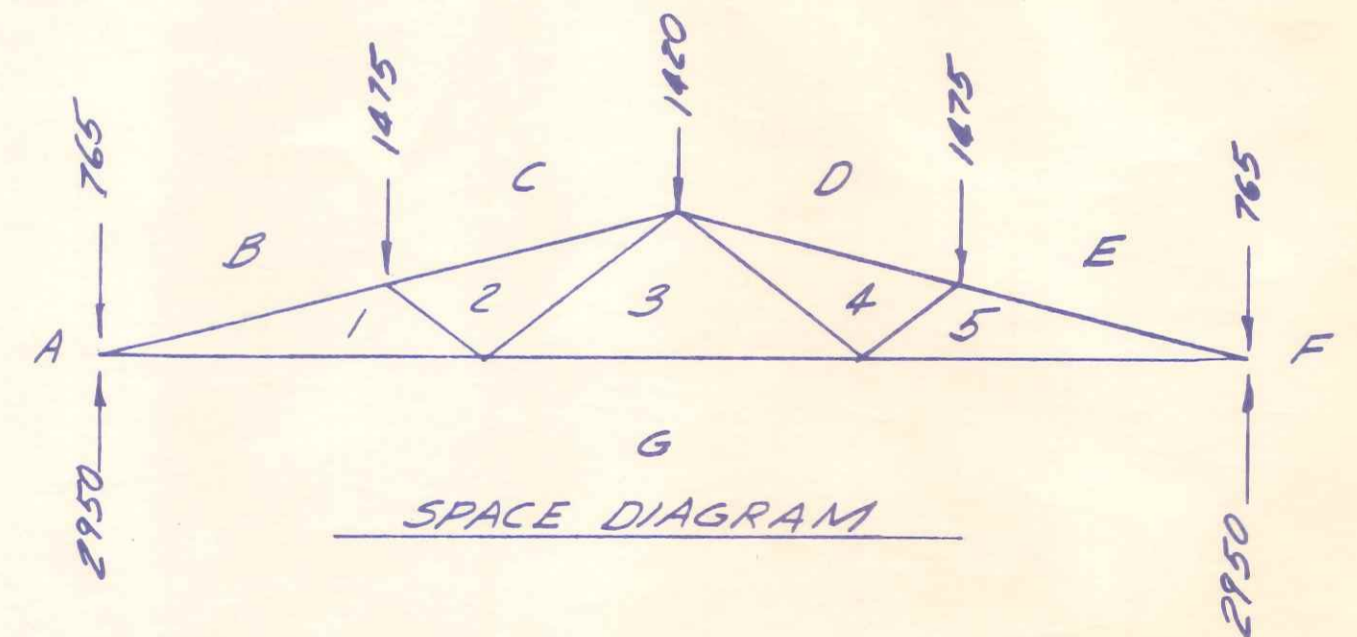
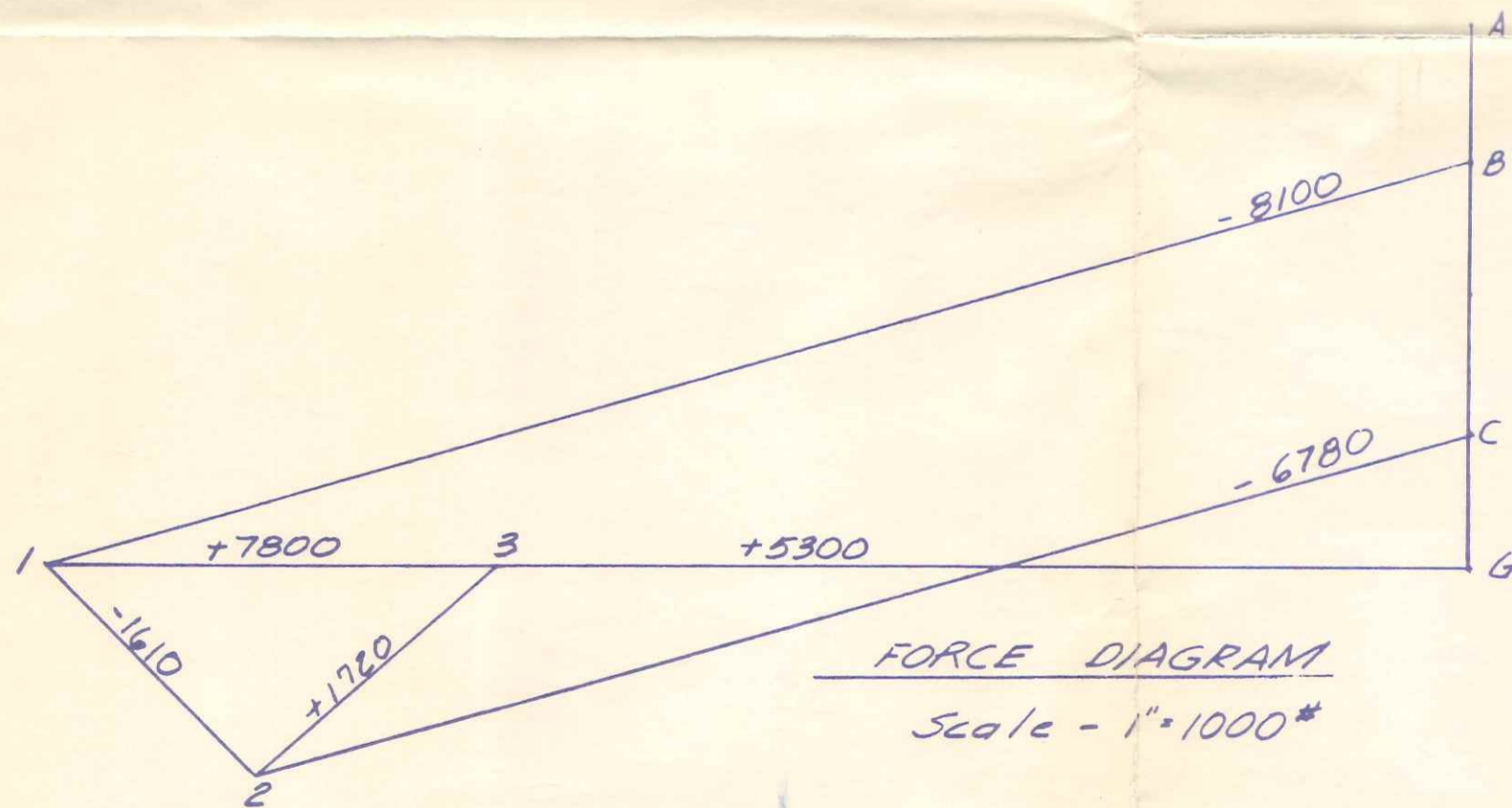
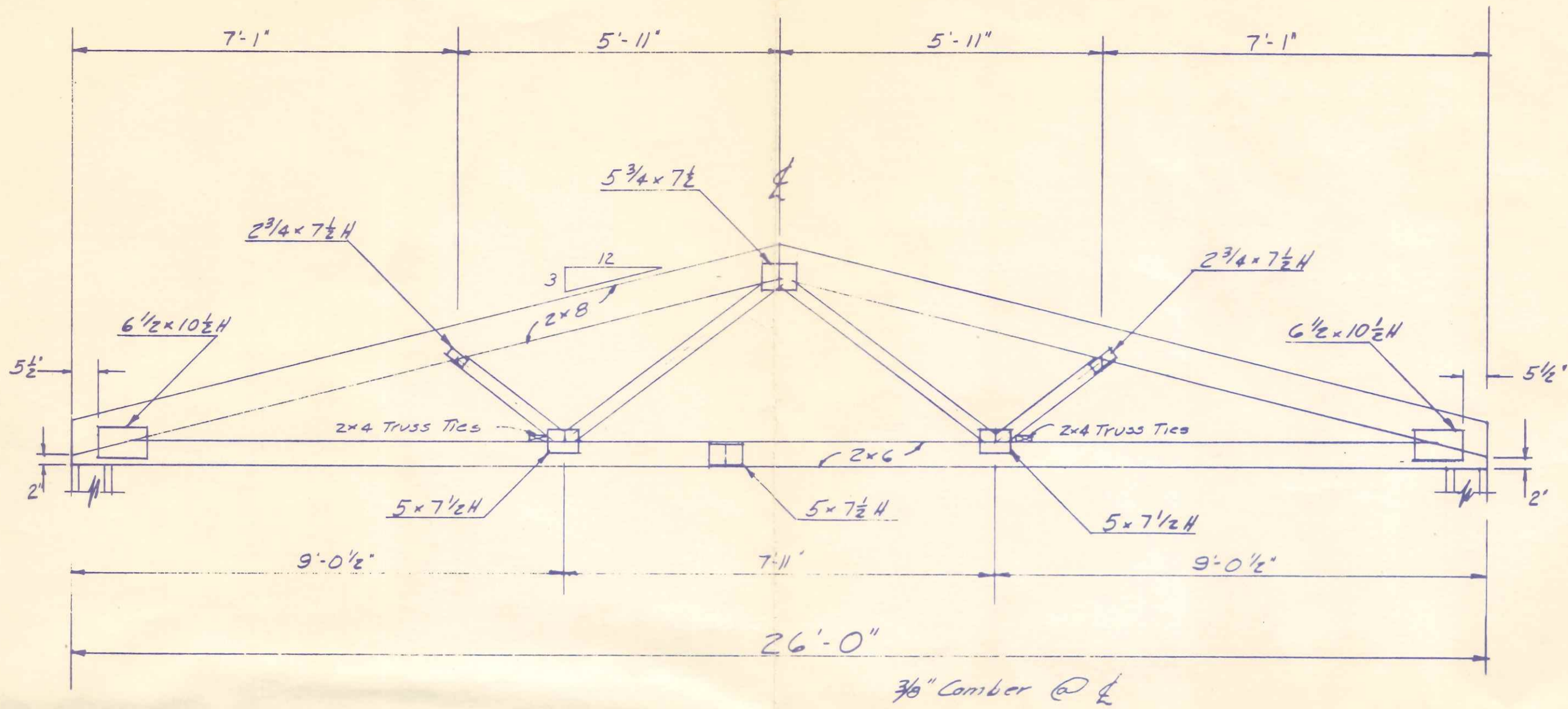
W Wickes Buildings
A DIVISION OF THE WICKES CORPORATION

26 x 32 ADDITION
FOR
G. VICTOR FABER

435
freedom

NAPOLEON,
OHIO

APPROVED BY: <i>[Signature]</i>	REVISD:	DRAWN BY: ERICHER	JOB NO. 74063
DATE: 4-10-74	REVISD:	SCALE: VARIES	SHEET 1 OF 1



NOTES

- 1) Connector Plates shall be placed on both sides of truss joint and centered unless otherwise noted
- 2) Designed in accordance with the latest revisions of the "National Design Specification for Stress Grade Lumber and Its Fastenings" N. L. M. A. and the latest revisions of the "Design Specifications for Light Metal Plated Connected Wood Trusses", T. P. I.

CONNECTOR PLATES

Hydro-Nail "H" heavy duty - 16 ga. Rated 160 psi or 9#/Tooth

DESIGN LOAD

TRUSS SPACING	EQUIVALENT LOADING		TOTAL LOADING
	TOP CH'D LIVE	TOP CH'D DEAD	
8'-0" O.C.	25.0 P.S.F.	5.0 P.S.F.	30.0 P.S.F.
5'-4" O.C.	40.0 P.S.F.	5.0 P.S.F.	45.0 P.S.F.
4'-0" O.C.	55.0 P.S.F.	5.0 P.S.F.	60.0 P.S.F.

All Bottom Ch'ds Load = 0 p.s.f.

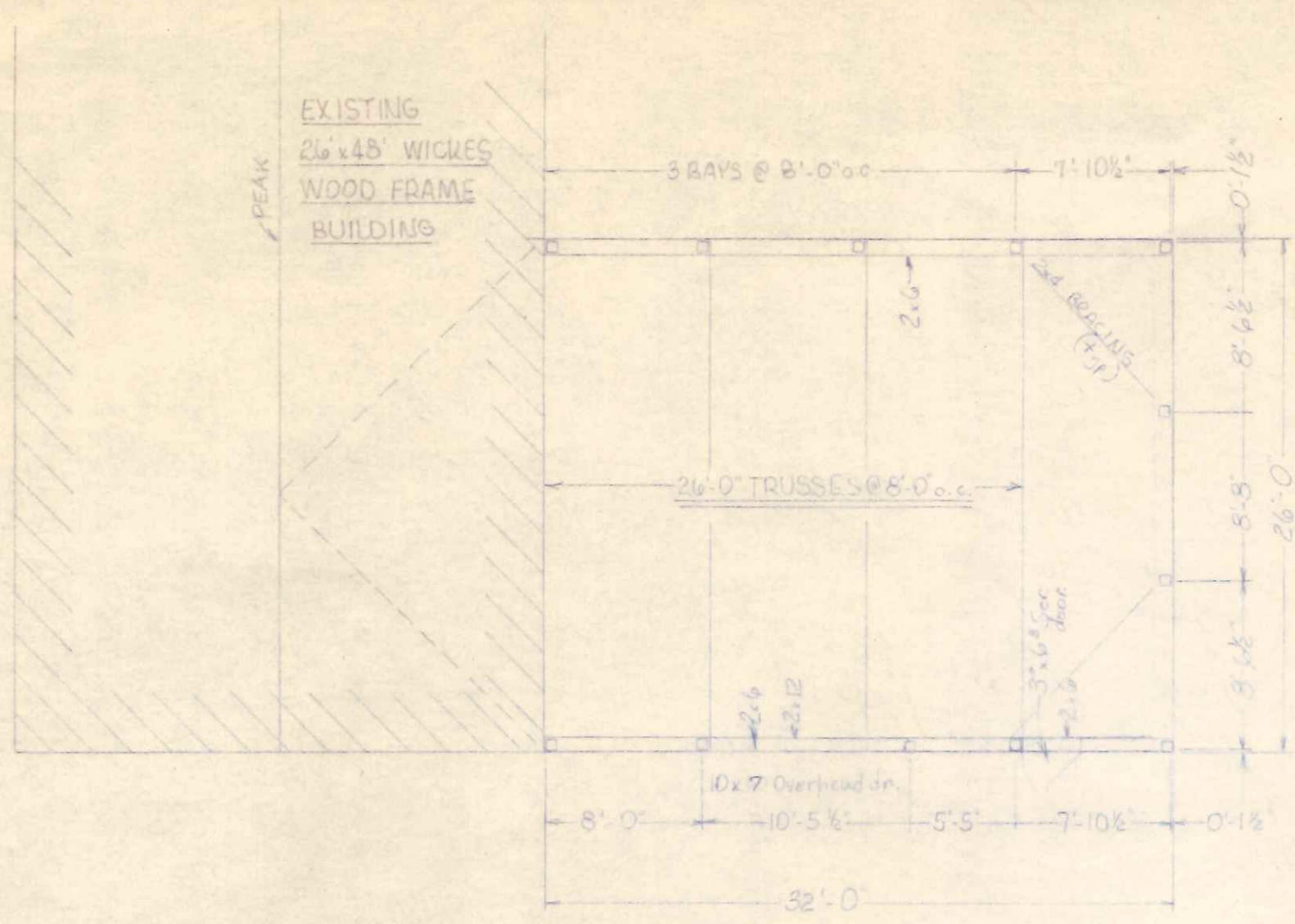
LUMBER

Top Chord - No. 1KD So. Pine } $f_b = 1650 \text{ psi}, f_c = 1450 \text{ psi}$
 Bottom Ch'd - No. 1KD So. Pine } $f_t = 1100 \text{ psi}$
 Webs 2x4 No. 2KD MG or better

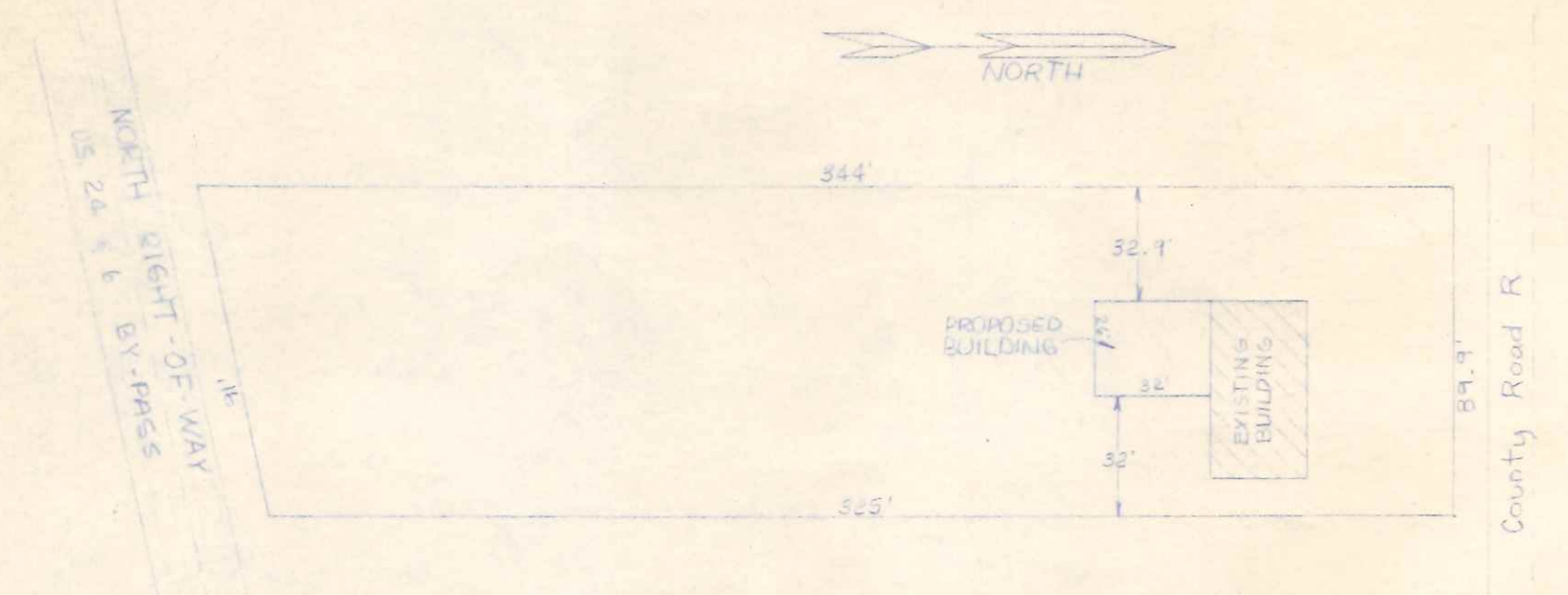


"B" SERIES TRUSSES

APPROVED BY:	REVISION:	DRAWN BY: G. J. E.	JOB NO.:
DATE: 10/1/73	REVISION:	SCALE:	SHEET 01

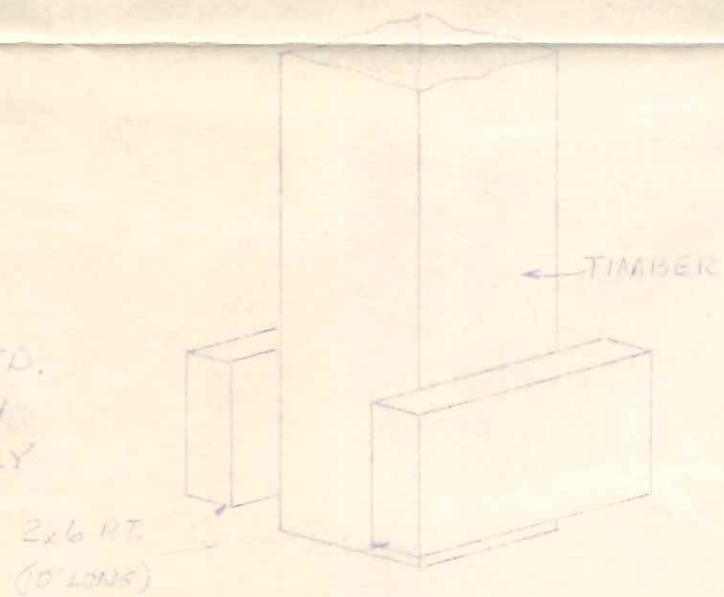


PLAN

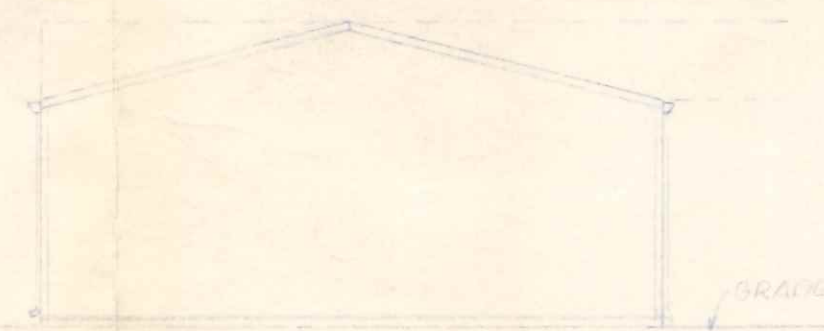


PLOT PLAN
(1" = 60'-0")

- NOTES:
- DESIGN LOAD = 25 p.s.f. LIVE + 5 p.s.f. DEAD
 - ROOFING - NATURAL ALUM.
 - SIDING - GOLD ALUM.
 - INSULATION - 1A TECHNIFOAM
 - STRESSES TIMBERS $f_c = 1300$ p.s.i. $f_t = 775$ p.s.i.
GIRTS & PURLINS $f_c = 1100$ p.s.i.
SUPPORTS $f_c = 1650$ p.s.i.
 - DESIGN SOIL CAPACITY = 3000 p.s.i.
 - NAILS @ STRUCTURAL MEMBERS SHALL BE CASE HARDENED
 - EXIT DOOR TO HAVE TYPE "B" HARDWARE
 - MINIMUM OF (2) TYPE 4BC CARBON DIOXIDE FIRE EXTINGUISHERS REQUIRED.
 - METAL SIDING TO BE GROUNDED WITH 8' COPPER ROD AND LABELED SECURELY TO SIDING.



ANCHOR PAD DETAIL



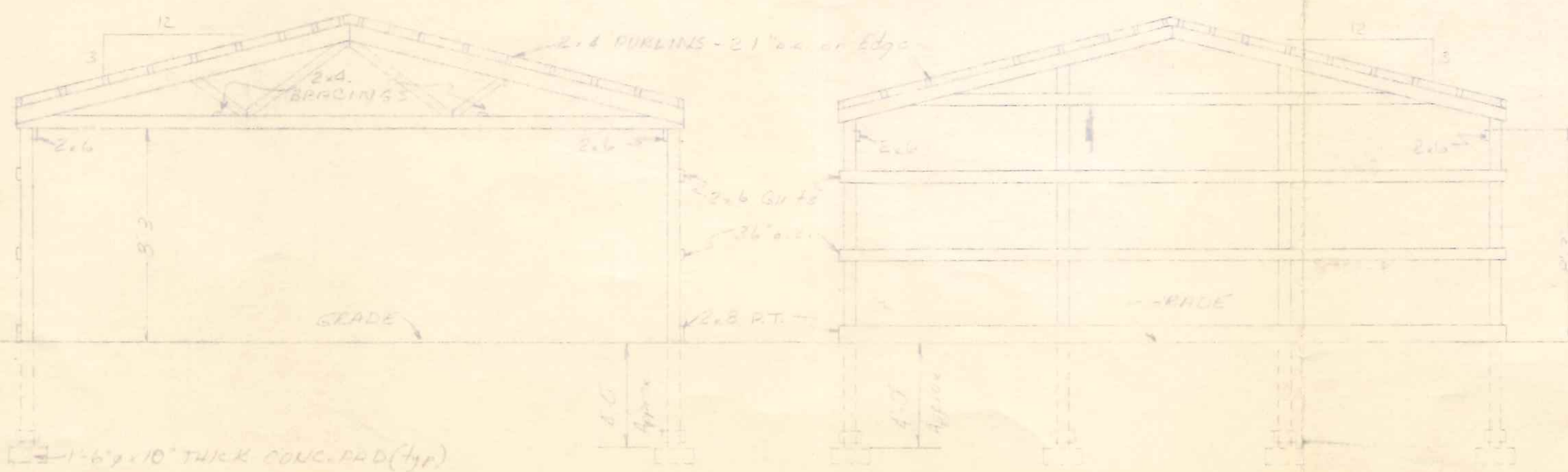
SOUTH ELEVATION



EAST ELEVATION



WEST ELEVATION



CROSS SECTION

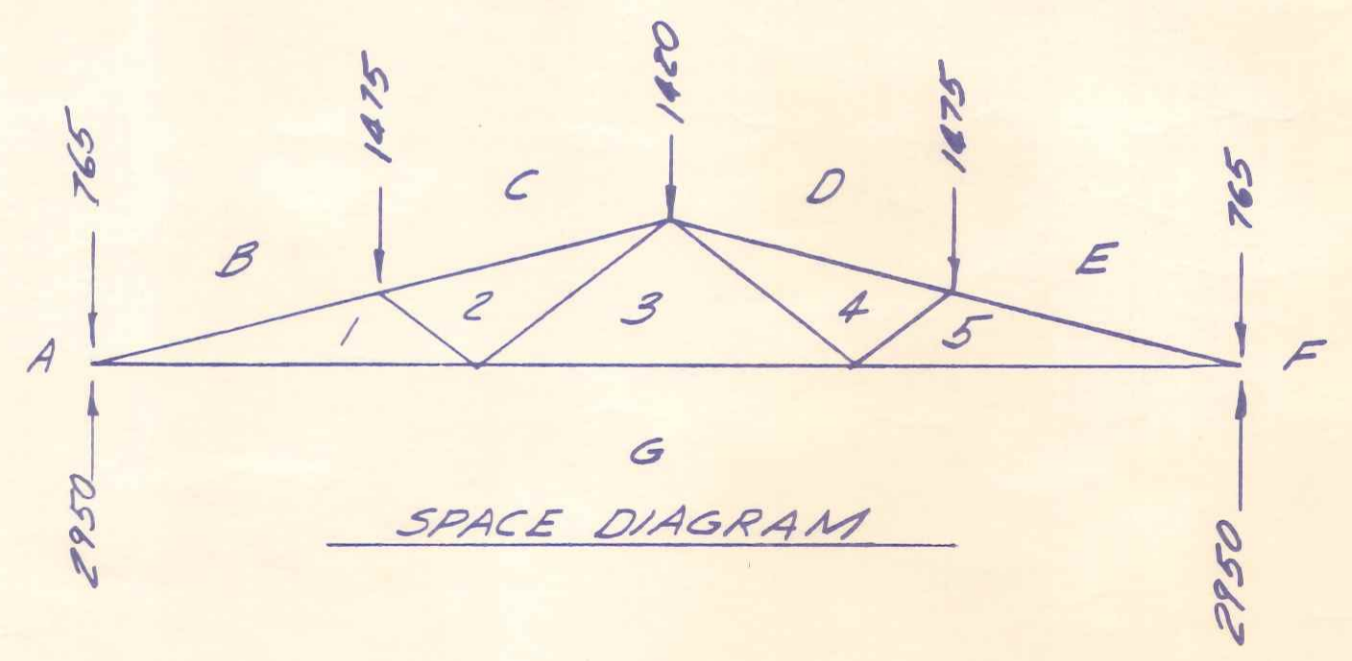
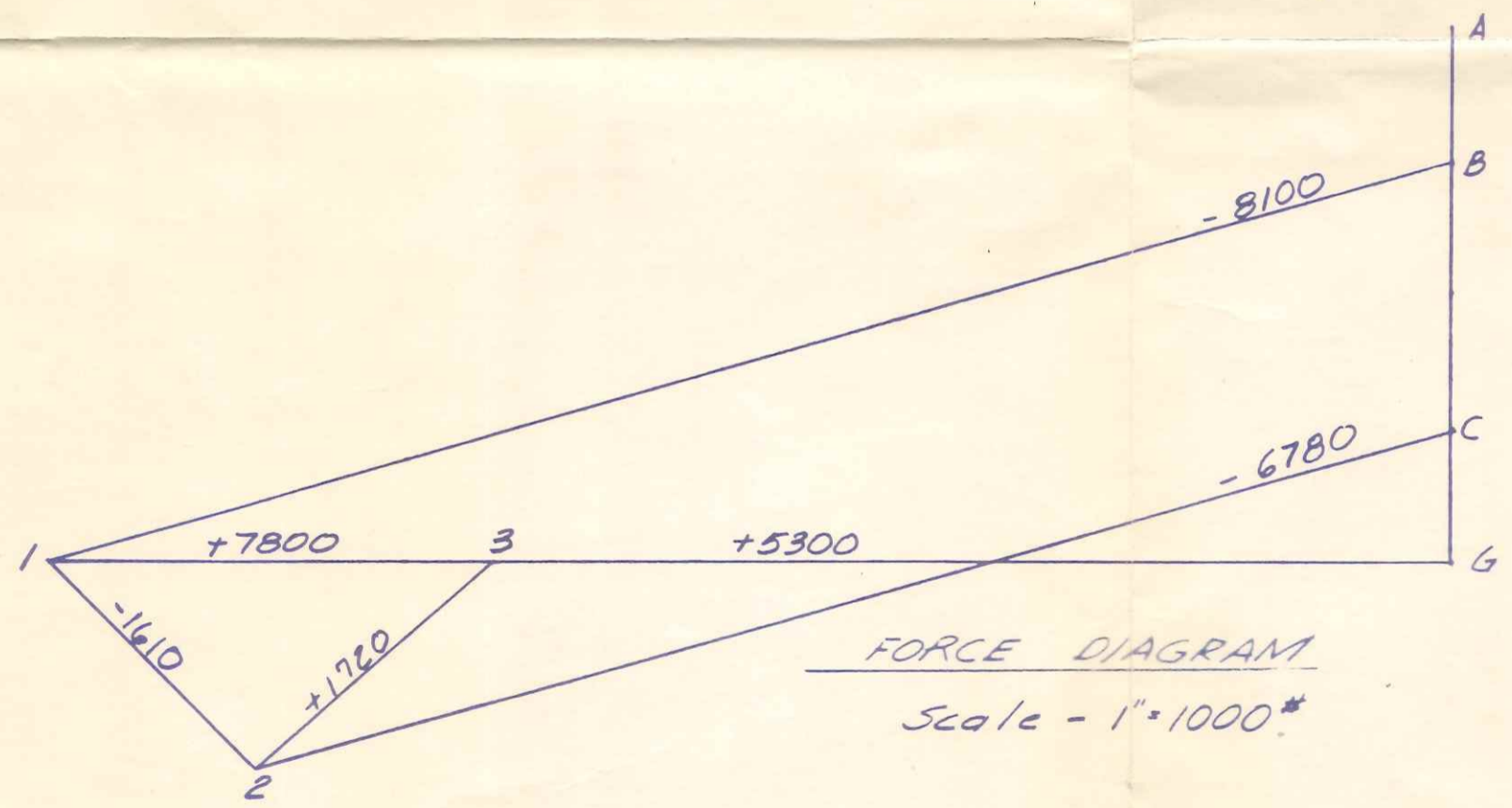
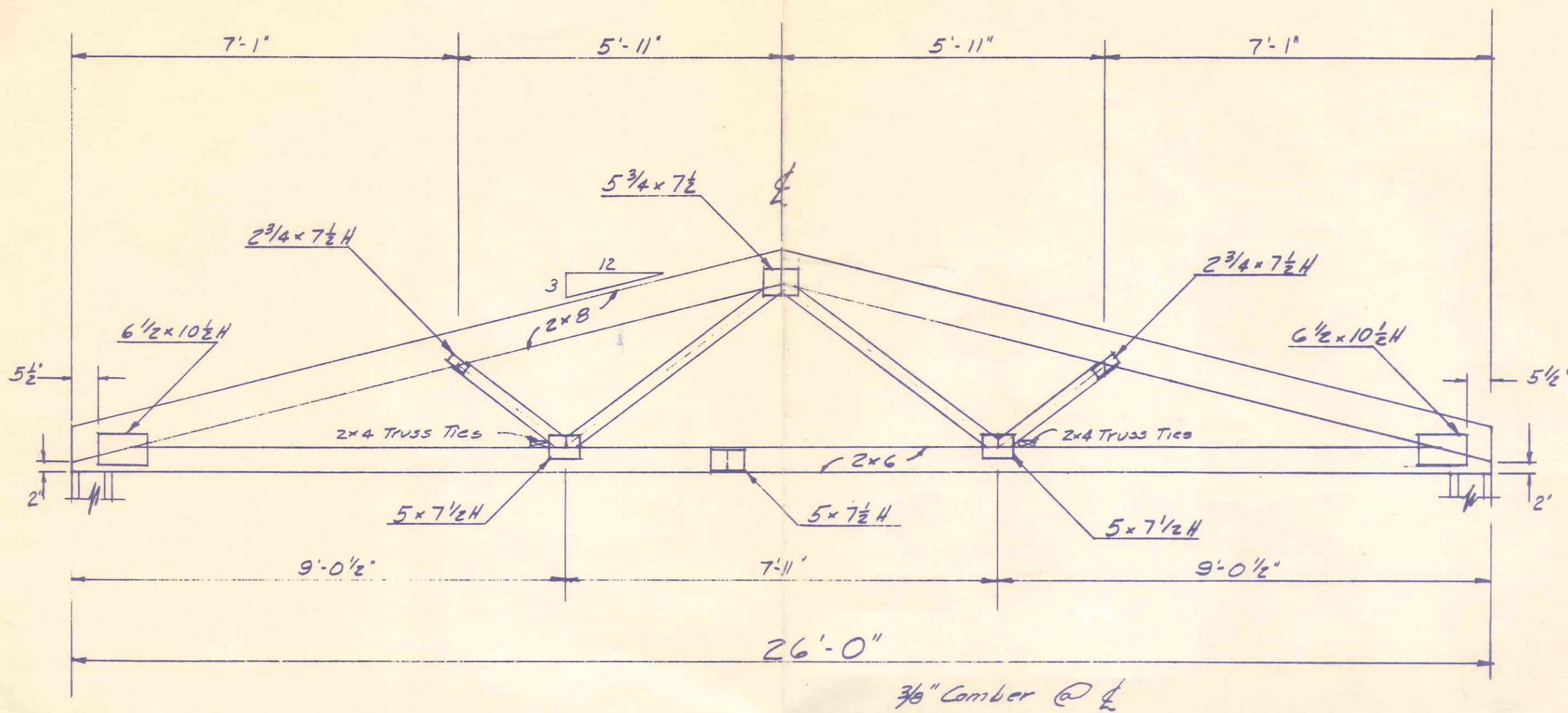
END FRAMING ELEVATION



W Wickes Buildings
A DIVISION OF THE WICKES CORPORATION

26-32 ALLIANCE
FOR
6 VICTOR CABER
NAPOLEON, OHIO

APPROVED BY: <i>[Signature]</i>	REVISED:	DRAWN BY: <i>[Signature]</i>	JOB NO. 74023
DATE: 4-10-74	REVISED:	SCALE: 1/8" = 1'-0"	SHEET 1 OF 1



NOTES

- 1) Connector Plates shall be placed on both sides of truss joint and centered unless otherwise noted
- 2) Designed in accordance with the latest revisions of the "National Design Specification for Stress Grade Lumber and Its Fastenings" N.L.M.A. and the latest revisions of the "Design Specifications for Light Metal Plated Connected Wood Trusses". T.P.I.

CONNECTOR PLATES

Hydro-Nail "H" heavy duty - 16 ga. Rated 160 psi or 94#/Tooth

DESIGN LOAD

TRUSS SPACING	EQUIVALENT LOADING		TOTAL LOADING
	TOP CH'D LIVE	TOP CH'D DEAD	
8'-0" O.C.	25.0 P.S.F.	5.0 P.S.F.	30.0 P.S.F.
5'-4" O.C.	40.0 P.S.F.	5.0 P.S.F.	45.0 P.S.F.
4'-0" O.C.	55.0 P.S.F.	5.0 P.S.F.	60.0 P.S.F.

All Bottom Ch'ds Load = 0 p.s.f.

LUMBER

Top Chord - No. 1KD So. Pine } $f_b = 1650 \text{ psi}$, $f_c = 1450 \text{ psi}$
 Bottom Ch'd - No. 1KD So. Pine } $f_t = 1100 \text{ psi}$
 Webs 2x4 No. 2KD MG or better



"B" SERIES TRUSSES

APPROVED BY:	REVISIONS:	DRAWN BY: G. J. E.	JOB NO.:
DATE: 10/1/73	REVISIONS:	SCALE:	SHEET OF